

Procedure 6.1 - Troubleshooting the Lower and Upper Interconnect Cables

Anti-static kits can be ordered from Precor (part number 20024-101).

Troubleshooting the Upper Interconnect Cable

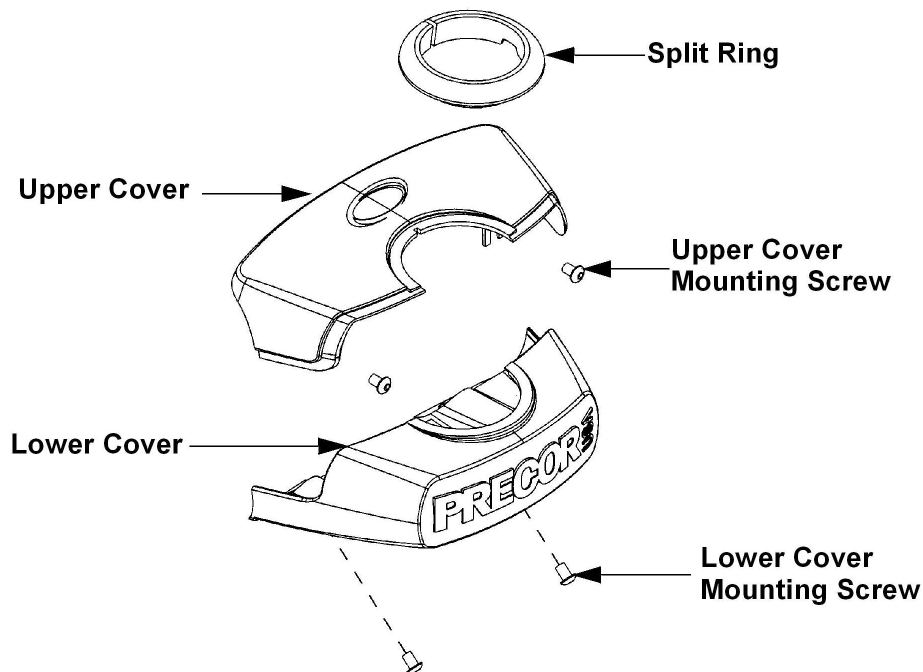
1. Set the on/off switch in the 'off' position.

WARNING

Before continuing with this procedure, review the Warning and Caution statements listed in Section One, Things You Should Know.

2. Attach the anti-static wrist strap to your arm, then connect the ground lead of the wrist strap to the units frame.
3. Remove two screws that fasten the upper mid-point cover. Remove two screws that fasten the lower mid-point cover. Remove both halves of the cover and the split gasket. See Diagram 6.1

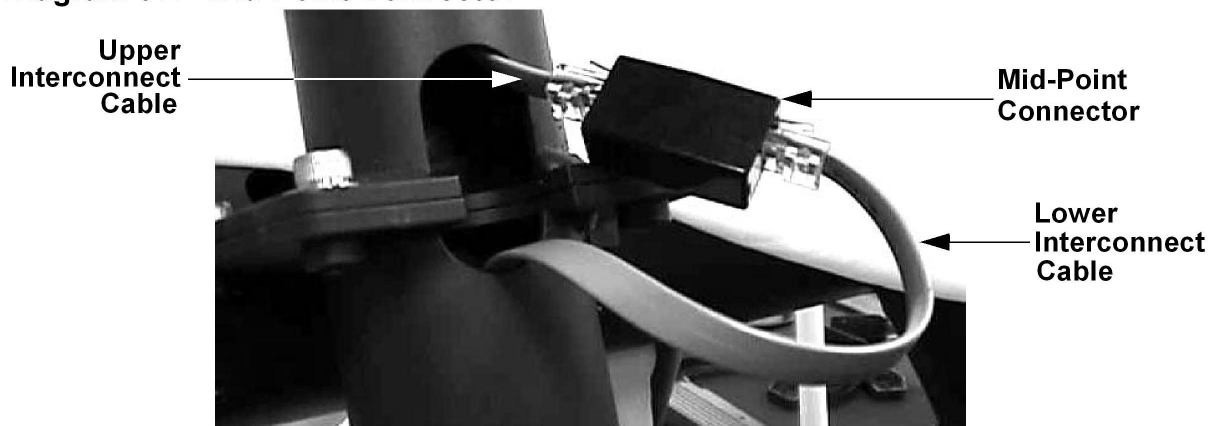
Diagram 6.1 - Mid-Point Cover



4. Remove the four screws from the rear of the upper display housing. Remove the display housing front panel from the display housing. Disconnect the upper interconnect cable from the upper PCA (connector J5).

5. Disconnect the upper interconnect cable from the mid-point connector. See Diagram 6.2

Diagram 6.2 - Mid-Point Connector



6. External of the upper column, connect a replacement upper interconnect cable to the mid-point connector and the upper PCA (connector J5).
7. Check operation as described in Section 4. If the unit works properly, replace the upper interconnect cable as described in Procedure 7.4.
8. If the symptoms are unchanged, remove the external upper interconnect cable. Reconnect the internal upper interconnect cable to the mid-point connector and the upper PCA. Set the display housing front panel in its mounting position and fasten it with the four mounting screws removed in step 4. Troubleshoot the lower interconnect cable starting with step 9.

Troubleshooting the Lower Interconnect Cable

9. Remove the rear cover as described in Procedure 7.1. Remove the shield from the lower PCA.
10. Disconnect the lower interconnect cable from the mid-point connector and the lower PCA (connector J5).
11. External of the frame, connect a replacement lower interconnect cable to the mid-point connector and the lower PCA.
12. Check operation as described in Section 4. If the unit works properly, replace the lower interconnect cable as described in Procedure 7.4.
13. If the symptoms are unchanged, remove the external lower interconnect cable. Reconnect the internal lower interconnect cable to the mid-point connector and the lower PCA. Remove the upper and lower interconnect cables from the mid-point connector. Connect a replacement mid-point connector between the two interconnect cables and retest the unit per Procedure 4.
14. Replace the lower PCA shield, rear cover (Procedure 7.1) and the main column cover (Procedure 7.27). If the unit still does not function correctly, contact Precor Technical Support.